

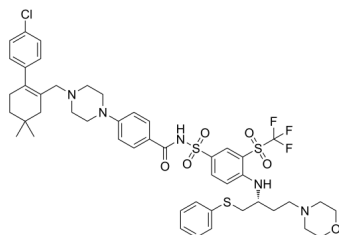
Navitoclax

Cat. No.: HY-10087
Batch No.: 261025
CAS No.: 923564-51-6
Molecular Formula: C₄₇H₅₅ClF₃N₅O₆S₃

ANALYTICAL DATA

Theoretical: C(57.81%)、H(5.7%)、N(7.17%)
Result: C(57.44%)、H(5.75%)、N(6.87%)

Chemical Structure:



Caution: Product has not been fully validated for medical applications. For research use only.

Tel: 609-228-6898

Fax: 609-228-5909

E-mail: tech@MedChemExpress.com

Address: 1 Deer Park Dr, Suite Q, Monmouth Junction, NJ 08852, USA