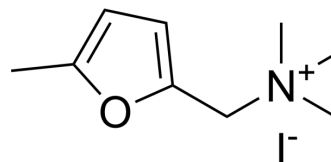


## Methylfurmethide iodide

Cat. No.:	HY-101010
CAS No.:	1197-60-0
Molecular Formula:	C <sub>9</sub> H <sub>16</sub> INO
Molecular Weight:	281.13
Target:	Others
Pathway:	Others
Storage:	Please store the product under the recommended conditions in the Certificate of Analysis.



### BIOLOGICAL ACTIVITY

#### Description

Methylfurmethide is an acetylcholine receptor. Methylfurmethide blocks the uptake of atropine. Methylfurmethide can be used to study the properties of acetylcholine receptors in intestinal smooth muscle <sup>[1]</sup>.

### REFERENCES

[1]. PATON WD, et al. THE UPTAKE OF ATROPINE AND RELATED DRUGS BY INTESTINAL SMOOTH MUSCLE OF THE GUINEA-PIG IN RELATION TO ACETYLCHOLINE RECEPTORS. Proc R Soc Lond B Biol Sci. 1965 Aug 24;163:1-44.

**Caution: Product has not been fully validated for medical applications. For research use only.**

Tel: 609-228-6898

Fax: 609-228-5909

E-mail: tech@MedChemExpress.com

Address: 1 Deer Park Dr, Suite Q, Monmouth Junction, NJ 08852, USA