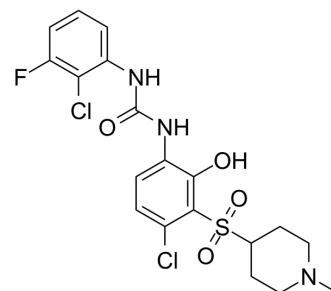


CXCR2-IN-1

Cat. No.:	HY-101022		
CAS No.:	1873376-49-8		
Molecular Formula:	C ₁₉ H ₂₀ Cl ₂ FN ₃ O ₄ S		
Molecular Weight:	476.35		
Storage:	Powder	-20°C	3 years
		4°C	2 years
	In solvent	-80°C	2 years
		-20°C	1 year



SOLVENT & SOLUBILITY

In Vitro

DMSO : 5.4 mg/mL (11.34 mM; Need ultrasonic and warming)

	Solvent Concentration	Mass	1 mg	5 mg	10 mg
Preparing Stock Solutions	1 mM		2.0993 mL	10.4965 mL	20.9930 mL
	5 mM		0.4199 mL	2.0993 mL	4.1986 mL
	10 mM		0.2099 mL	1.0496 mL	2.0993 mL

Please refer to the solubility information to select the appropriate solvent.

BIOLOGICAL ACTIVITY

Description	CXCR2-IN-1 is a central nervous system penetrant CXCR2 antagonist with a pIC ₅₀ of 9.3.
IC ₅₀ & Target	pIC ₅₀ : 9.3 (CXCR2) ^[1]
In Vitro	CXCR2 plays an important role in the activation and recruitment of neutrophils to sites of inflammation. CXCR2-IN-1 (compound 22) shows favorable central nervous system penetration property (Br/Bl>0.45) ^[1] . MCE has not independently confirmed the accuracy of these methods. They are for reference only.
In Vivo	CXCR2-IN-1 shows efficacy in a cuprizone-induced demyelination model through oral administration, providing evidence to support CXCR2 to be a potential therapeutic target to treat demyelinating diseases such as multiple sclerosis ^[1] . MCE has not independently confirmed the accuracy of these methods. They are for reference only.

PROTOCOL

Animal	Mice: Mice are fed with cuprizone for 5 weeks to cause demyelinating lesions in the CNS and then orally administrated with
--------	--

Administration ^[1]

CXCR2-IN-1 for 9 consecutive days at doses of 30 and 100 mg/kg twice daily^[1].

MCE has not independently confirmed the accuracy of these methods. They are for reference only.

CUSTOMER VALIDATION

- Int Immunopharmacol. 2019 Nov;76:105877
- J Cell Mol Med. 2020 Sep;24(18):10604-10614.

See more customer validations on www.MedChemExpress.com

Caution: Product has not been fully validated for medical applications. For research use only.

Tel: 609-228-6898

Fax: 609-228-5909

E-mail: tech@MedChemExpress.com

Address: 1 Deer Park Dr, Suite Q, Monmouth Junction, NJ 08852, USA