

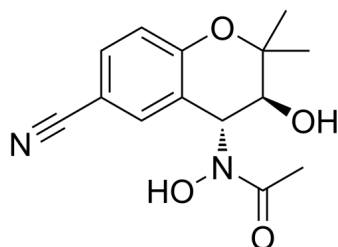
Y-26763

Cat. No.: HY-101069
Batch No.: 100630
CAS No.: 127408-31-5
Molecular Formula: C₁₄H₁₆N₂O₄

ANALYTICAL DATA

Theoretical: C(60.86%)、H(5.8%)、N(10.14%)
Result: C(60.72%)、H(5.95%)、N(9.86%)

Chemical Structure:



Caution: Product has not been fully validated for medical applications. For research use only.

Tel: 609-228-6898

Fax: 609-228-5909

E-mail: tech@MedChemExpress.com

Address: 1 Deer Park Dr, Suite Q, Monmouth Junction, NJ 08852, USA