

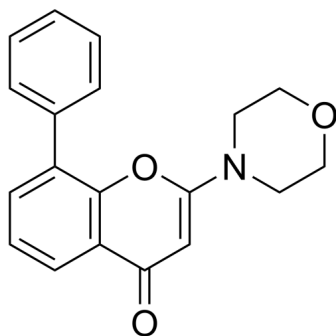
LY294002

Cat. No.: HY-10108
Batch No.: 134167
CAS No.: 154447-36-6
Molecular Formula: C₁₉H₁₇NO₃

ANALYTICAL DATA

Theoretical: C(74.25%), H(5.58%), N(4.56%)
Result: C(74.21%), H(5.74%), N(4.46%)

Chemical Structure:



Caution: Product has not been fully validated for medical applications. For research use only.

Tel: 609-228-6898

Fax: 609-228-5909

E-mail: tech@MedChemExpress.com

Address: 1 Deer Park Dr, Suite Q, Monmouth Junction, NJ 08852, USA