

## W146

---

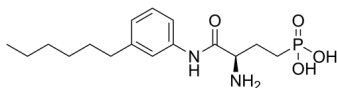
Cat. No.: HY-101395  
Batch No.: 115308  
CAS No.: 909725-61-7  
Molecular Formula: C<sub>16</sub>H<sub>27</sub>N<sub>2</sub>O<sub>4</sub>P

### ANALYTICAL DATA

Theoretical: C(56.13%)、H(7.95%)、N(8.18%)

Result: C(55.79%)、H(7.90%)、N(8.21%)

Chemical Structure:



**Caution: Product has not been fully validated for medical applications. For research use only.**

Tel: 609-228-6898

Fax: 609-228-5909

E-mail: [tech@MedChemExpress.com](mailto:tech@MedChemExpress.com)

Address: 1 Deer Park Dr, Suite Q, Monmouth Junction, NJ 08852, USA