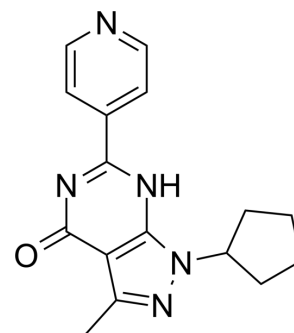


## Win 58237

Cat. No.:	HY-101661
CAS No.:	158001-76-4
Molecular Formula:	C <sub>16</sub> H <sub>17</sub> N <sub>5</sub> O
Molecular Weight:	295.34
Target:	Phosphodiesterase (PDE)
Pathway:	Metabolic Enzyme/Protease
Storage:	Please store the product under the recommended conditions in the Certificate of Analysis.



### BIOLOGICAL ACTIVITY

<b>Description</b>	Win 58237 is a cyclic nucleotide phosphodiesterase (PDE) inhibitor, with K <sub>i</sub> of 170 nM for PDE V, possessing vasorelaxant activity.
<b>IC<sub>50</sub> &amp; Target</b>	K <sub>i</sub> : 170 nM (PDE V) <sup>[1]</sup>
<b>In Vitro</b>	Win 58237 is a competitive inhibitor of cGMP PDE V from canine aorta, with a K <sub>i</sub> value of 170 nM. Win 58237 is a potent inhibitor of PDE V isolated from vascular tissue with an IC <sub>50</sub> value of 240 nM. It is a relatively less potent inhibitor of calmodulin-sensitive PDE I and cGMP-inhibitable cyclic AMP PDE III; but does inhibit cyclic AMP PDE IV with an IC <sub>50</sub> value of approximately 300 nM. Win 58237 possesses vasorelaxant activity in the presence of an intact endothelium or nitric oxide <sup>[1]</sup> . MCE has not independently confirmed the accuracy of these methods. They are for reference only.
<b>In Vivo</b>	Win 58237 (0.3-3.0 mg/kg i.v.) decreases mean arterial pressure in conscious spontaneously hypertensive rats with an associated increase in vascular (aortic) cGMP content in vivo. Win 58237 (10 mg/kg i.v.) increases plasma cGMP levels, from basal levels of 6.7 ± 1.0 to 31.4 ± 3.5 fmol/μL <sup>[1]</sup> . MCE has not independently confirmed the accuracy of these methods. They are for reference only.

### REFERENCES

[1]. Silver PJ, et al. Cyclic GMP potentiation by WIN 58237, a novel cyclic nucleotide phosphodiesterase inhibitor. J Pharmacol Exp Ther. 1994 Dec;271(3):1143-9.

**Caution: Product has not been fully validated for medical applications. For research use only.**

Tel: 609-228-6898

Fax: 609-228-5909

E-mail: tech@MedChemExpress.com

Address: 1 Deer Park Dr, Suite Q, Monmouth Junction, NJ 08852, USA