

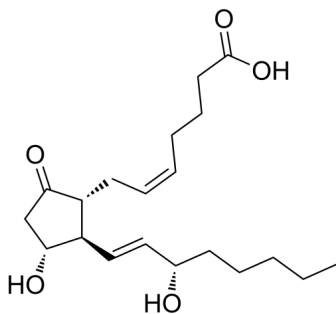
Prostaglandin E2

Cat. No.: HY-101952
Batch No.: 158811
CAS No.: 363-24-6
Molecular Formula: C₂₀H₃₂O₅

ANALYTICAL DATA

Theoretical: C(68.15%), H(9.15%), N(<0.30%)
Result: C(68.36%), H(9.21%), N(<0.30%)

Chemical Structure:



Caution: Product has not been fully validated for medical applications. For research use only.

Tel: 609-228-6898

Fax: 609-228-5909

E-mail: tech@MedChemExpress.com

Address: 1 Deer Park Dr, Suite Q, Monmouth Junction, NJ 08852, USA