

## PSB-1115

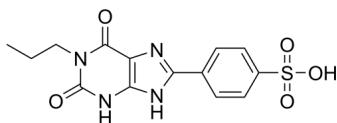
---

Cat. No.: HY-103182  
Batch No.: 354194  
CAS No.: 152529-79-8  
Molecular Formula: C<sub>14</sub>H<sub>14</sub>N<sub>4</sub>O<sub>5</sub>S

### ANALYTICAL DATA

Theoretical: C(43.52%), H(4.70%), N(14.50%)  
Result: C(43.25%), H(4.76%), N(14.37%)

Chemical Structure:



**Caution: Product has not been fully validated for medical applications. For research use only.**

Tel: 609-228-6898

Fax: 609-228-5909

E-mail: [tech@MedChemExpress.com](mailto:tech@MedChemExpress.com)

Address: 1 Deer Park Dr, Suite Q, Monmouth Junction, NJ 08852, USA