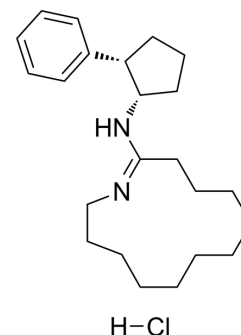


MDL12330A

Cat. No.:	HY-103192
CAS No.:	40297-09-4
Molecular Formula:	C ₂₃ H ₃₇ ClN ₂
Molecular Weight:	377.01
Target:	Adenylate Cyclase; Phosphodiesterase (PDE)
Pathway:	GPCR/G Protein; Metabolic Enzyme/Protease
Storage:	4°C, sealed storage, away from moisture and light * In solvent : -80°C, 6 months; -20°C, 1 month (sealed storage, away from moisture and light)



SOLVENT & SOLUBILITY

In Vitro

DMSO : 25 mg/mL (66.31 mM; Need ultrasonic and warming)

Concentration	Solvent	Mass		
		1 mg	5 mg	10 mg
Preparing Stock Solutions	1 mM	2.6524 mL	13.2622 mL	26.5245 mL
	5 mM	0.5305 mL	2.6524 mL	5.3049 mL
	10 mM	0.2652 mL	1.3262 mL	2.6524 mL

Please refer to the solubility information to select the appropriate solvent.

BIOLOGICAL ACTIVITY

Description

MDL12330A (RMI12330A) is an adenylyl cyclase inhibitor. MDL12330A inhibits the vasopressin action on the short-circuit current (SCC). MDL12330A is also an inhibitor of cAMP phosphodiesterase^[1].

REFERENCES

[1]. Lippe C, et al. Actions of vasopressin and isoprenaline on the ionic transport across the isolated frog skin in the presence and the absence of adenylyl cyclase inhibitors MDL12330A and SQ22536. *Comp Biochem Physiol C Comp Pharmacol Toxicol*. 1991;99(1-2):209-11.

Caution: Product has not been fully validated for medical applications. For research use only.

Tel: 609-228-6898

Fax: 609-228-5909

E-mail: tech@MedChemExpress.com

Address: 1 Deer Park Dr, Suite Q, Monmouth Junction, NJ 08852, USA