

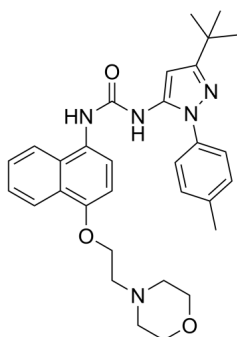
Doramapimod

Cat. No.: HY-10320
Batch No.: 64420
CAS No.: 285983-48-4
Molecular Formula: C₃₁H₃₇N₅O₃

ANALYTICAL DATA

Theoretical: C(70.32%)、H(7.08%)、N(13.23%)
Result: C(70.11%)、H(7.01%)、N(13.15%)

Chemical Structure:



Caution: Product has not been fully validated for medical applications. For research use only.

Tel: 609-228-6898

Fax: 609-228-5909

E-mail: tech@MedChemExpress.com

Address: 1 Deer Park Dr, Suite Q, Monmouth Junction, NJ 08852, USA