

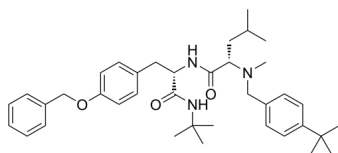
PD173212

Cat. No.: HY-103318
Batch No.: 151708
CAS No.: 217171-01-2
Molecular Formula: C₃₈H₅₃N₃O₃

ANALYTICAL DATA

Theoretical: C(-), H(-), N(-), Peptide Content(≥60.0%)
Result: C(76.33%), H(8.31%), N(6.82%), Peptide Content(97.3%)

Chemical Structure:



Caution: Product has not been fully validated for medical applications. For research use only.

Tel: 609-228-6898

Fax: 609-228-5909

E-mail: tech@MedChemExpress.com

Address: 1 Deer Park Dr, Suite Q, Monmouth Junction, NJ 08852, USA