

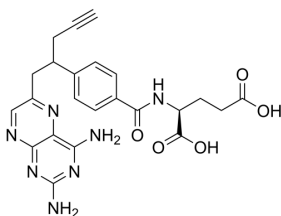
Pralatrexate

Cat. No.:	HY-10446
CAS No.:	146464-95-1
Batch No.:	09586
Chemical Name:	L-Glutamic acid, N-[4-[1-[(2,4-diamino-6-pteridiny)l)methyl]-3-butyn-1-yl]benzoyl]-

PHYSICAL AND CHEMICAL PROPERTIES

Molecular Formula:	C ₂₃ H ₂₃ N ₇ O ₅		
Molecular Weight:	477.47		
Storage:	Powder	-20°C	3 years
		4°C	2 years
	In solvent	-80°C	2 years
		-20°C	1 year

Chemical Structure:



ANALYTICAL DATA

Appearance:	Light yellow to yellow (Solid)
LCMS:	Consistent with structure
Purity (LCMS):	99.23%
Conclusion:	The product has been tested and complies with the given specifications.

Caution: Product has not been fully validated for medical applications. For research use only.

Tel: 609-228-6898

Fax: 609-228-5909

E-mail: tech@MedChemExpress.com

Address: 1 Deer Park Dr, Suite Q, Monmouth Junction, NJ 08852, USA