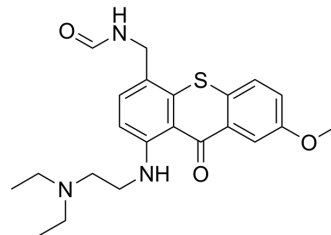


## SW 71425

Cat. No.:	HY-107008
CAS No.:	155990-20-8
Molecular Formula:	C <sub>22</sub> H <sub>27</sub> N <sub>3</sub> O <sub>3</sub> S
Molecular Weight:	413.53
Target:	Others
Pathway:	Others
Storage:	Please store the product under the recommended conditions in the Certificate of Analysis.



## BIOLOGICAL ACTIVITY

Description	SW 71425 inhibits cell growth against breast, colon, non-small cell lung, and ovarian tumors. <sup>[1]</sup>
-------------	--

## REFERENCES

[1]. Izbicka E, et al. Effects of SW 33377, SW 68210 and SW 71425 thioxanthones on in vitro colony formation of freshly explanted human tumor cells. Invest New Drugs. 1998;16(3):221-225.

**Caution: Product has not been fully validated for medical applications. For research use only.**

Tel: 609-228-6898

Fax: 609-228-5909

E-mail: tech@MedChemExpress.com

Address: 1 Deer Park Dr, Suite Q, Monmouth Junction, NJ 08852, USA