

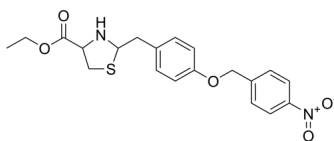
SN 6

Cat. No.: HY-107658
Batch No.: 33208
CAS No.: 415697-08-4
Molecular Formula: C₂₀H₂₂N₂O₅S

ANALYTICAL DATA

Theoretical: C(59.69%), H(5.51%), N(6.96%)
Result: C(59.62%), H(5.43%), N(7.01%)

Chemical Structure:



Caution: Product has not been fully validated for medical applications. For research use only.

Tel: 609-228-6898

Fax: 609-228-5909

E-mail: tech@MedChemExpress.com

Address: 1 Deer Park Dr, Suite Q, Monmouth Junction, NJ 08852, USA