

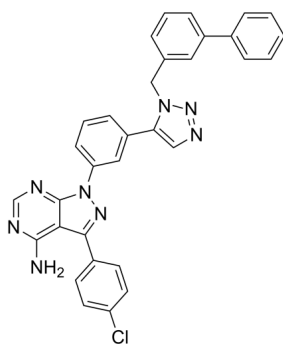
KB SRC 4

Cat. No.: HY-108488
Batch No.: 238838
CAS No.: 1380088-03-8
Molecular Formula: C₃₂H₂₃ClN₈

ANALYTICAL DATA

Theoretical: C(69.25%), H(4.18%), N(20.19%)
Result: C(68.89%), H(4.18%), N(20.11%)

Chemical Structure:



Caution: Product has not been fully validated for medical applications. For research use only.

Tel: 609-228-6898

Fax: 609-228-5909

E-mail: tech@MedChemExpress.com

Address: 1 Deer Park Dr, Suite Q, Monmouth Junction, NJ 08852, USA