

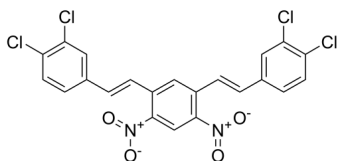
NSC636819

Cat. No.: HY-110154
Batch No.: 424725
CAS No.: 1618672-71-1
Molecular Formula: C₂₂H₁₂Cl₄N₂O₄

ANALYTICAL DATA

Theoretical: C(51.80%), H(2.37%), N(5.49%)
Result: C(52.02%), H(2.49%), N(5.42%)

Chemical Structure:



Caution: Product has not been fully validated for medical applications. For research use only.

Tel: 609-228-6898

Fax: 609-228-5909

E-mail: tech@MedChemExpress.com

Address: 1 Deer Park Dr, Suite Q, Monmouth Junction, NJ 08852, USA