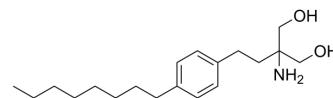


## Fingolimod

Cat. No.:	HY-11063
CAS No.:	162359-55-9
Molecular Formula:	C <sub>19</sub> H <sub>33</sub> NO <sub>2</sub>
Molecular Weight:	307.47
Target:	LPL Receptor; PAK
Pathway:	GPCR/G Protein; Cell Cycle/DNA Damage; Cytoskeleton
Storage:	Powder    -20°C    3 years 4°C    2 years In solvent   -80°C    2 years -20°C    1 year



### SOLVENT & SOLUBILITY

#### In Vitro

Ethanol : 7.69 mg/mL (25.01 mM; Need ultrasonic)  
 DMSO : 2 mg/mL (6.50 mM; ultrasonic and warming and heat to 60°C)

	Solvent Concentration	Mass	1 mg	5 mg	10 mg
Preparing Stock Solutions	1 mM		3.2523 mL	16.2617 mL	32.5235 mL
	5 mM		0.6505 mL	3.2523 mL	6.5047 mL
	10 mM		0.3252 mL	1.6262 mL	3.2523 mL

Please refer to the solubility information to select the appropriate solvent.

#### In Vivo

- Add each solvent one by one: 10% EtOH >> 40% PEG300 >> 5% Tween-80 >> 45% saline  
Solubility: ≥ 1 mg/mL (3.25 mM); Clear solution
- Add each solvent one by one: 10% EtOH >> 90% (20% SBE-β-CD in saline)  
Solubility: ≥ 1 mg/mL (3.25 mM); Clear solution
- Add each solvent one by one: 10% EtOH >> 90% corn oil  
Solubility: ≥ 1 mg/mL (3.25 mM); Clear solution

### BIOLOGICAL ACTIVITY

Description	Fingolimod (FTY720 free base) is a sphingosine 1-phosphate (S1P) antagonist with an IC <sub>50</sub> of 0.033 nM in K562 and NK cells. Fingolimod also is a pak1 activator, a immunosuppressant <sup>[1]</sup> .	
IC <sub>50</sub> & Target	S1P 0.033 nM (IC <sub>50</sub> , in K562 and NK cells)	PAK1

In Vitro	<p>The monocyte-derived immature dendritic cells (iDCs) are pretreated with various concentrations of S1P for various periods of time prior to their incubation with NK cells. Four hours incubation of autologous or allogeneic iDCs with 0.2-20 <math>\mu</math>M of S1P significantly protects these cells from NK cell lysis. The IC<sub>50</sub> values of S1P are calculated at 160 nM for autologous iDCs, and 34 nM for allogeneic iDCs. Next, the inhibitory effect of S1P is reversed by various concentrations of Fingolimod or SEW2871, with an IC<sub>50</sub> effect of 173 or 15 nM, respectively<sup>[1]</sup>. Fingolimod has been reported to reduce LPA synthesis via inhibition of the lysophospholipase autotaxin. Fingolimod treatment correlates with a significant elevation of axonal cAMP, a crucial factor for axonal outgrowth. Additionally, Fingolimod significantly reduces LPA levels in the injured nerve. PF-8380 treatment correlates with improved myelin thickness<sup>[2]</sup>.</p> <p>MCE has not independently confirmed the accuracy of these methods. They are for reference only.</p>
In Vivo	<p>Fingolimod treatment results in significantly increased nerve conduction at 14 days post-crush in wildtype C57BL/6 mice. However, Foxn1<sup>-/-</sup> mice, which are devoid of T- but not B-lymphocytes, show an improvement of nerve regeneration under fingolimod treatment. Although the mean increase in nerve conduction velocity in both fingolimod-treated and control Foxn1<sup>-/-</sup> mice implies a potentially positive role of T-lymphocyte deficiency on nerve regeneration, only fingolimod-treated Foxn1<sup>-/-</sup> mice show a significant improvement compared to C57BL/6 controls and performed better in the functional analysis<sup>[2]</sup>. Treatment of the animals with Fingolimod for 28 d results in a clear reduction in the binding of <sup>18</sup>F-GE180 when compared with vehicle-treated animals and evaluated by ex vivo autoradiography. Quantification of the binding of the radiotracer revealed a significant reduction in the binding potential of <sup>18</sup>F-GE180 (P&lt;0.0001) after treatment with Fingolimod<sup>[3]</sup>.</p> <p>MCE has not independently confirmed the accuracy of these methods. They are for reference only.</p>

## PROTOCOL

Cell Assay <sup>[1]</sup>	<p>Immature dendritic cells (DCs) are left intact or are incubated with 2 <math>\mu</math>M S1P, 10 nM Fingolimod, 10 nM SEW2871 or the combinations of S1P with these drugs for 4 h. As a control 1 <math>\mu</math>g/mL LPS is used. The cells are washed and incubated in a 96-well plate (v-bottom, 2×10<sup>5</sup> cells per well), washed again and resuspended in PBS buffer containing 0.1% sodium azide. They are labeled with 1 <math>\mu</math>g/mL FITC-conjugated mouse anti-human CD80, 1 <math>\mu</math>g/mL FITC-conjugated mouse anti-human CD83, 1 <math>\mu</math>g/mL FITC-conjugated mouse anti-human CD86, 1 <math>\mu</math>g/mL FITC-conjugated mouse anti-human HLA-class I, 1 <math>\mu</math>g/mL FITC-conjugated mouse anti-human HLA-DR, 1 <math>\mu</math>g/mL FITC-conjugated mouse anti-human HLA-E, or 1 <math>\mu</math>g/mL FITC-conjugated mouse IgG as a control. The cells are washed twice, and examined in the flow cytometer. Markers are set according to the isotype control FITC-conjugated mouse IgG<sup>[1]</sup>.</p> <p>MCE has not independently confirmed the accuracy of these methods. They are for reference only.</p>
Animal Administration <sup>[2][3]</sup>	<p>Mice<sup>[2]</sup></p> <p>Rag1<sup>-/-</sup> mice (B6.129S7-Rag1<sup>tm1Mom</sup>/J), Foxn1<sup>-/-</sup> mice (B6.Cg/NTac-Foxn1<sup>nu</sup>) mice, and control C57BL/6 mice are used. Mice receive non-phosphorylated Fingolimod via intraperitoneal injection at a concentration of 1 mg/kg once daily over the course of 16 days, starting 2 days before crush until 14 days post-crush. PF-8380 is dissolved in DMSO and administered at a concentration of 10 mg/kg via intraperitoneal injection once daily, as well starting 2 days before until 14 days post-crush. Controls receive an equal volume of solvent.</p> <p>Rats<sup>[3]</sup></p> <p>Male Lewis rats (50-100 g, n=18) are used. After the peripheral activation of the lesion, the DTH EAE lesions are allowed to develop until day 127 to generate large chronic lesions and the animals are then treated for 28 d with either Fingolimod (n=7) or vehicle (n=7). The Fingolimod treatment is given daily (0.3 mg/kg in 0.5 mL of water). The control group is given water (0.5 mL) as a vehicle control. The animals are dosed via oral gavage to ensure accurate dosing. In this model, the acute inflammation subsides after day 20 of activation of the lesion, and the BBB damage subsides. Thus, at day 127 the lesion clearly represents a well-developed chronic MS lesion. PET imaging is performed immediately before initiation of treatment and at the end of the treatment period.</p> <p>MCE has not independently confirmed the accuracy of these methods. They are for reference only.</p>

## CUSTOMER VALIDATION

- Cell Res. 2022 Feb 1.
- Immunity. 2024 Feb 13;57(2):364-378.e9.
- Nat Commun. 2022 Jan 10;13(1):182.
- Theranostics. 2021 Jan 1;11(1):117-131.
- Haematologica. 2020 Mar;105(3):674-686.

See more customer validations on [www.MedChemExpress.com](http://www.MedChemExpress.com)

## REFERENCES

- [1]. Rolin J, et al. FTY720 and SEW2871 reverse the inhibitory effect of S1P on natural killer cell mediated lysis of K562 tumor cells and dendritic cells but not on cytokine release. Cancer Immunol Immunother. 2010, 59(4), 575-586.
- [2]. Szepanowski F, et al. Fingolimod promotes peripheral nerve regeneration via modulation of lysophospholipid signaling. J Neuroinflammation. 2016 Jun 10;13(1):143.
- [3]. Airas L, et al. In vivo PET imaging demonstrates diminished microglial activation after fingolimod treatment in an animal model of multiple sclerosis. J Nucl Med. 2015 Feb;56(2):305-10.
- [4]. Shirakabe K, et al. Modification of lymphocyte migration to Peyer's patches by inhibition of sphingosine-1-phosphate lyase ameliorates murine colitis. J Gastroenterol Hepatol. 2018 Jan 15.

**Caution: Product has not been fully validated for medical applications. For research use only.**

Tel: 609-228-6898

Fax: 609-228-5909

E-mail: [tech@MedChemExpress.com](mailto:tech@MedChemExpress.com)

Address: 1 Deer Park Dr, Suite Q, Monmouth Junction, NJ 08852, USA