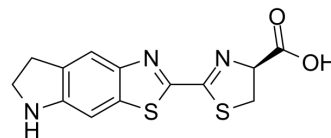


CycLuc1

Cat. No.:	HY-111653
CAS No.:	1247879-16-8
Molecular Formula:	C ₁₃ H ₁₁ N ₃ O ₂ S ₂
Molecular Weight:	305.38
Target:	Reactive Oxygen Species
Pathway:	Immunology/Inflammation; Metabolic Enzyme/Protease; NF-κB
Storage:	4°C, protect from light * In solvent : -80°C, 6 months; -20°C, 1 month (protect from light)



SOLVENT & SOLUBILITY

In Vitro	DMSO : ≥ 83.33 mg/mL (272.87 mM) * "≥" means soluble, but saturation unknown.					
		Solvent	Mass			
		Concentration		1 mg	5 mg	10 mg
	Preparing Stock Solutions	1 mM		3.2746 mL	16.3730 mL	32.7461 mL
		5 mM		0.6549 mL	3.2746 mL	6.5492 mL
	10 mM		0.3275 mL	1.6373 mL	3.2746 mL	
Please refer to the solubility information to select the appropriate solvent.						
In Vivo	1. Add each solvent one by one: 10% DMSO >> 40% PEG300 >> 5% Tween-80 >> 45% saline Solubility: ≥ 2.08 mg/mL (6.81 mM); Clear solution 2. Add each solvent one by one: 10% DMSO >> 90% (20% SBE-β-CD in saline) Solubility: ≥ 2.08 mg/mL (6.81 mM); Clear solution					

BIOLOGICAL ACTIVITY

Description	CycLuc1 is a brain penetrant luciferase substrate.
IC₅₀ & Target	Luciferase ^[1]

REFERENCES

[1]. Shiv K, et al. Abstract 4112: Synthetic luciferin, CycLuc1, improves bioluminescence imaging for intracranial glioblastoma xenografts. 10.1158/1538-7445.AM2018-4112

Caution: Product has not been fully validated for medical applications. For research use only.

Tel: 609-228-6898

Fax: 609-228-5909

E-mail: tech@MedChemExpress.com

Address: 1 Deer Park Dr, Suite Q, Monmouth Junction, NJ 08852, USA