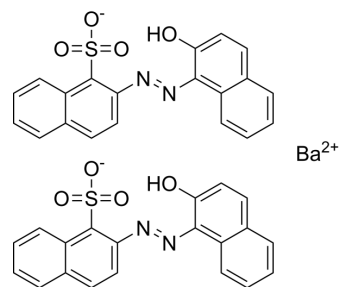


Pigment Red 49:1

Cat. No.:	HY-115416
CAS No.:	1103-38-4
Molecular Formula:	$C_{40}H_{26}BaN_4O_8S_2$
Molecular Weight:	892.11
Target:	Others
Pathway:	Others
Storage:	Please store the product under the recommended conditions in the Certificate of Analysis.



BIOLOGICAL ACTIVITY

Description

Pigment Red 49:1 (Barium lithol red) is an azo lake pigment. The color of Pigment Red 49:1 ranges from yellow to purplish blue^[1].

REFERENCES

[1]. Kennedy AR, et, al. Lithol Red: a systematic structural study on salts of a sulfonated azo pigment. Chemistry. 2012 Mar 5;18(10):3064-9.

Caution: Product has not been fully validated for medical applications. For research use only.

Tel: 609-228-6898

Fax: 609-228-5909

E-mail: tech@MedChemExpress.com

Address: 1 Deer Park Dr, Suite Q, Monmouth Junction, NJ 08852, USA