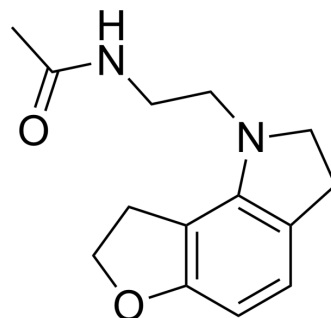


GR 196429

Cat. No.:	HY-116046
CAS No.:	170729-12-1
Molecular Formula:	C ₁₄ H ₁₈ N ₂ O ₂
Molecular Weight:	246.3
Target:	Melatonin Receptor
Pathway:	GPCR/G Protein; Neuronal Signaling
Storage:	Please store the product under the recommended conditions in the Certificate of Analysis.



BIOLOGICAL ACTIVITY

Description

GR 196429 is a melatonin receptor agonist with some selectivity for the MT1 subtype. GR 196429 produces both sleep-promoting effects and alterations of circadian rhythm, as well as stimulating melatonin release in mice^[1].

REFERENCES

[1]. I J Beresford, et al. Pharmacological characterisation of melatonin mt1 receptor-mediated stimulation of [35S]-GTPgammaS binding. *Biochem Pharmacol.* 1998 Nov 1;56(9):1167-74.

Caution: Product has not been fully validated for medical applications. For research use only.

Tel: 609-228-6898

Fax: 609-228-5909

E-mail: tech@MedChemExpress.com

Address: 1 Deer Park Dr, Suite Q, Monmouth Junction, NJ 08852, USA