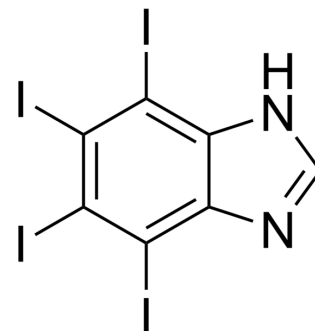


TIBI

Cat. No.:	HY-116559		
CAS No.:	1196457-06-3		
Molecular Formula:	C ₇ H ₂ I ₄ N ₂		
Molecular Weight:	621.72		
Target:	Others		
Pathway:	Others		
Storage:	Powder	-20°C	3 years
		4°C	2 years
	In solvent	-80°C	6 months
		-20°C	1 month



SOLVENT & SOLUBILITY

In Vitro

DMSO : 50 mg/mL (80.42 mM; Need ultrasonic)

Solvent	Mass	Concentration		
		1 mg	5 mg	10 mg
Preparing Stock Solutions	1 mM	1.6084 mL	8.0422 mL	16.0844 mL
	5 mM	0.3217 mL	1.6084 mL	3.2169 mL
	10 mM	0.1608 mL	0.8042 mL	1.6084 mL

Please refer to the solubility information to select the appropriate solvent.

BIOLOGICAL ACTIVITY

Description

TIBI is a potent and ATP-competitive inhibitor of Rio1 (IC₅₀: 0.09 μM, K_i: 0.05 μM). TIBI enhances the thermostability of the enzyme Rio1^[1].

IC₅₀ & Target

IC₅₀: 0.09 μM, K_i: 0.05 μM (Rio1)^[1]

REFERENCES

[1]. Kubiński K, et al. Benzimidazole inhibitors of protein kinase CK2 potently inhibit the activity of atypical protein kinase Rio1. Mol Cell Biochem. 2017 Feb;426(1-2):195-203.

Caution: Product has not been fully validated for medical applications. For research use only.

Tel: 609-228-6898

Fax: 609-228-5909

E-mail: tech@MedChemExpress.com

Address: 1 Deer Park Dr, Suite Q, Monmouth Junction, NJ 08852, USA