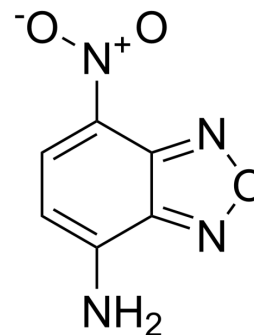


## NBD-amine

Cat. No.:	HY-119791
CAS No.:	10199-91-4
Molecular Formula:	C <sub>6</sub> H <sub>4</sub> N <sub>4</sub> O <sub>3</sub>
Molecular Weight:	180.12
Target:	Others
Pathway:	Others
Storage:	Please store the product under the recommended conditions in the Certificate of Analysis.



## BIOLOGICAL ACTIVITY

### Description

NBD-amine is a fluorogenic amine. NBD-amine displays the property of fluorescing weakly in water and strongly in organic solvents, membranes or hydrophobic environments<sup>[1]</sup>.

## REFERENCES

[1]. Hiroshi Ikeda, et al. Skeleton-selective fluorescent chemosensor based on cyclodextrin bearing a 4-amino-7-nitrobenz-2-oxa-1,3-diazole moiety. *Org Biomol Chem.* 2005 Dec 7;3(23):4262-7.

**Caution: Product has not been fully validated for medical applications. For research use only.**

Tel: 609-228-6898

Fax: 609-228-5909

E-mail: tech@MedChemExpress.com

Address: 1 Deer Park Dr, Suite Q, Monmouth Junction, NJ 08852, USA