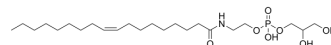


Glycerophospho-N-oleoyl ethanolamine

Cat. No.:	HY-120164
CAS No.:	201738-24-1
Molecular Formula:	C ₂₃ H ₄₆ NO ₇ P
Molecular Weight:	479.59
Target:	Endogenous Metabolite
Pathway:	Metabolic Enzyme/Protease
Storage:	Please store the product under the recommended conditions in the Certificate of Analysis.



BIOLOGICAL ACTIVITY

Description

Glycerophospho-N-oleoyl ethanolamine (GNOE) is a serum metabolite. Glycerophospho-N-oleoyl ethanolamine can be used to study Bicuspid aortic valve (BAV) disease^[1].

REFERENCES

[1]. Wang W, et al. Analysis of Serum Metabolites to Diagnose Bicuspid Aortic Valve. Sci Rep. 2016 Nov 15;6:37023.

Caution: Product has not been fully validated for medical applications. For research use only.

Tel: 609-228-6898

Fax: 609-228-5909

E-mail: tech@MedChemExpress.com

Address: 1 Deer Park Dr, Suite Q, Monmouth Junction, NJ 08852, USA