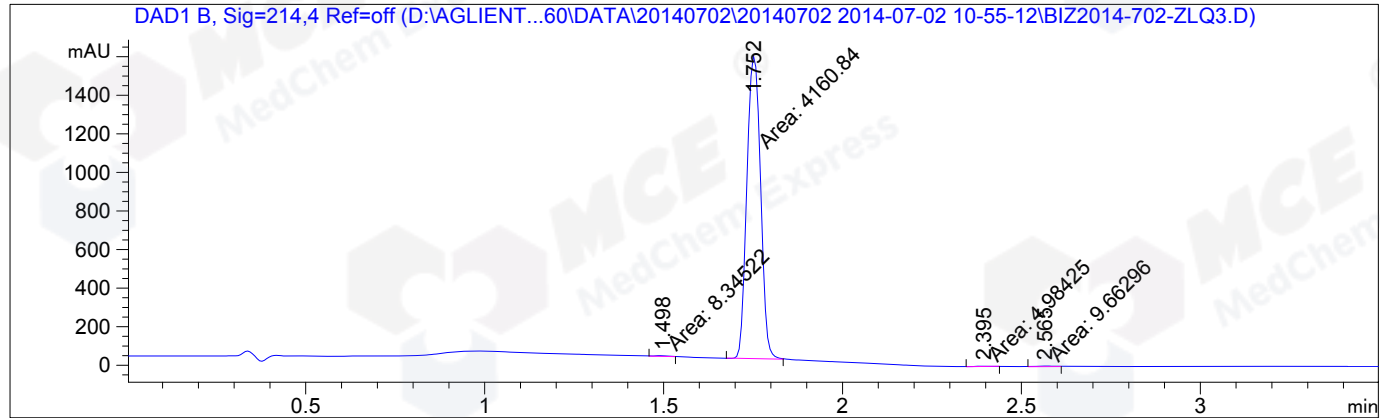


=====
Acq. Operator : Li Shan(LCMS-02) Seq. Line : 32
Acq. Instrument : HY-LCMS-02 Location : Vial 84
Injection Date : 7/2/2014 3:22:47 PM Inj : 1
Inj Volume : 3.000 µl
Acq. Method : D:\AGLIENT 1260\DATA\20140702\20140702 2014-07-02 10-55-12\100-1000MS+3MIN.
M
Last changed : 7/2/2014 10:55:13 AM by Li Shan(LCMS-02)
Analysis Method : D:\AGLIENT 1260\DATA\20140612\20140612 2014-06-12 16-28-37\HM-297C_22,COL2.
M (Sequence Method)
Last changed : 7/2/2014 3:39:40 PM by Li Shan(LCMS-02)
(modified after loading)
Catalog No : HY-12028 Batch#12294

Additional Info : Peak(s) manually integrated



=====
Area Percent Report
=====

Sorted By : Signal
Multiplier : 1.0000
Dilution : 1.0000
Do not use Multiplier & Dilution Factor with ISTDs

Signal 1: DAD1 B, Sig=214,4 Ref=off

Peak #	RetTime [min]	Type	Width [min]	Area [mAU*s]	Height [mAU]	Area %
1	1.498	MM	0.0375	8.34522	3.71343	0.1995
2	1.752	MM	0.0439	4160.83936	1580.21960	99.4504
3	2.395	MM	0.0473	4.98425	1.75713	0.1191
4	2.565	MM	0.0572	9.66296	2.81329	0.2310

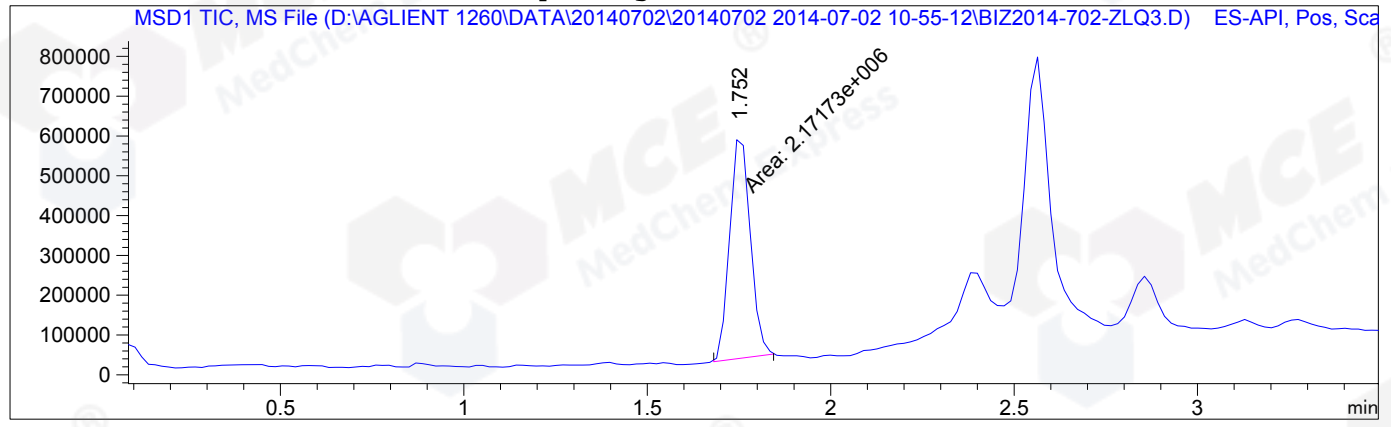
Totals : 4183.83178 1588.50345

=====
*** End of Report ***

HY-12028-20140702

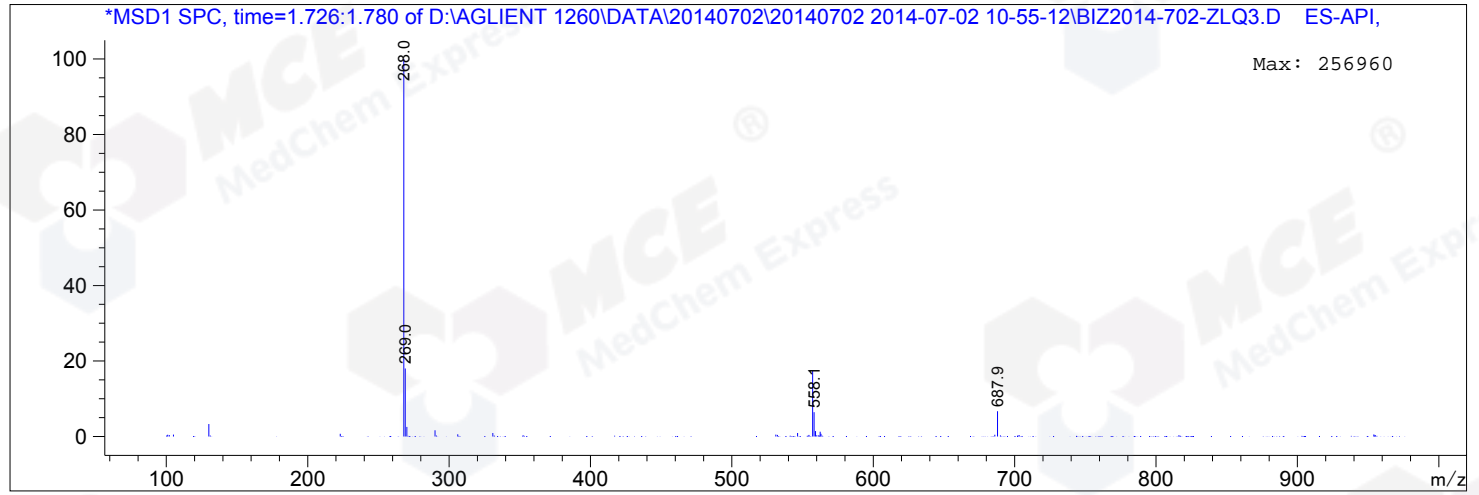
=====
Acq. Operator : Li Shan(LCMS-02) Seq. Line : 32
Acq. Instrument : HY-LCMS-02 Location : Vial 84
Injection Date : 7/2/2014 3:22:47 PM Inj : 1
Inj Volume : 3.000 µl
Acq. Method : D:\AGLIENT 1260\DATA\20140702\20140702 2014-07-02 10-55-12\100-1000MS+3MIN.
M
Last changed : 7/2/2014 10:55:13 AM by Li Shan(LCMS-02)
Analysis Method : D:\AGLIENT 1260\DATA\20140612\20140612 2014-06-12 16-28-37\HM-297C_22,COL2.
M (Sequence Method)
Last changed : 7/2/2014 3:40:52 PM by Li Shan(LCMS-02)
(modified after loading)
Catalog No : HY-12028 Batch#12294

Additional Info : Peak(s) manually integrated



MS Signal: MSD1 TIC, MS File, ES-API, Pos, Scan, Frag: 50
Spectra averaged over upper half of peaks.
Noise Cutoff: 1000 counts.
Reportable Ion Abundance: > 10%.

Retention Time (MS)	MS Area	Mol. Weight or Ion
1.752	2171733	557.10 I
		269.00 I
		268.00 I



*** End of Report ***