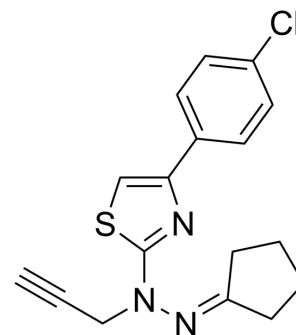


CPTH2-Alkyne

Cat. No.:	HY-120317
CAS No.:	1613116-16-7
Molecular Formula:	C ₁₇ H ₁₆ ClN ₃ S
Molecular Weight:	329.85
Target:	Histone Acetyltransferase
Pathway:	Epigenetics
Storage:	Please store the product under the recommended conditions in the Certificate of Analysis.



BIOLOGICAL ACTIVITY

Description

CPTH2-Alkyne is a cell active analog of CPTH2 (HY-W013274). CPTH2-Alkyne specifically accumulates in nucleoli and locates in nuclear periphery and in cytoplasm. CPTH2-Alkyne inhibits N-acetyltransferase 10 (NAT10). CPTH2-Alkyne is used in study of nuclear architecture and application in laminopathy^[1].

REFERENCES

[1]. Larrieu D, et al., Chemical inhibition of NAT10 corrects defects of laminopathic cells. *Science*. 2014 May 2;344(6183):527-32.

Caution: Product has not been fully validated for medical applications. For research use only.

Tel: 609-228-6898

Fax: 609-228-5909

E-mail: tech@MedChemExpress.com

Address: 1 Deer Park Dr, Suite Q, Monmouth Junction, NJ 08852, USA