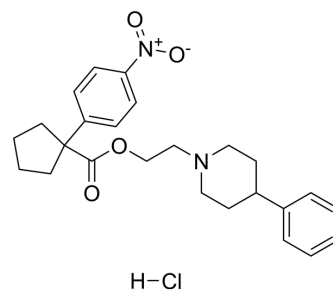


RLH-033

Cat. No.:	HY-120842
CAS No.:	157097-10-4
Molecular Formula:	C ₂₅ H ₃₁ ClN ₂ O ₄
Molecular Weight:	458.98
Target:	mAChR
Pathway:	GPCR/G Protein; Neuronal Signaling
Storage:	Please store the product under the recommended conditions in the Certificate of Analysis.



BIOLOGICAL ACTIVITY

Description

RLH-033 is a potent and selective ligand for the sigma 1 recognition site. RLH-033 has high affinity for sigma 1 sites labeled by [³H](+)-pentazocine with a K_i of 50 pM^[1].

REFERENCES

[1]. R.L. Hudkins, et al. RLH-033, a novel, potent and selective ligand for the sigma 1 recognition site. *Eur J Pharmacol.* 1994 Dec 12;271(1):235-6.

Caution: Product has not been fully validated for medical applications. For research use only.

Tel: 609-228-6898

Fax: 609-228-5909

E-mail: tech@MedChemExpress.com

Address: 1 Deer Park Dr, Suite Q, Monmouth Junction, NJ 08852, USA