

## CPI-4203

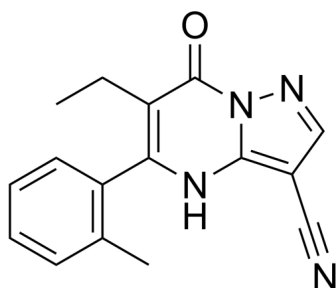
---

Cat. No.: HY-123419  
Batch No.: 376756  
CAS No.: 1628214-07-2  
Molecular Formula: C<sub>16</sub>H<sub>14</sub>N<sub>4</sub>O

### ANALYTICAL DATA

Theoretical: C(69.05%), H(5.07%), N(20.12%)  
Result: C(69.18%), H(4.96%), N(20.15%)

Chemical Structure:



**Caution: Product has not been fully validated for medical applications. For research use only.**

Tel: 609-228-6898

Fax: 609-228-5909

E-mail: [tech@MedChemExpress.com](mailto:tech@MedChemExpress.com)

Address: 1 Deer Park Dr, Suite Q, Monmouth Junction, NJ 08852, USA