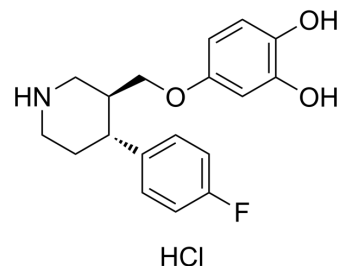


## Desmethylene paroxetine hydrochloride

Cat. No.:	HY-124320
CAS No.:	1394861-12-1
Molecular Formula:	C <sub>18</sub> H <sub>21</sub> ClFNO <sub>3</sub>
Molecular Weight:	353.82
Target:	Drug Metabolite
Pathway:	Metabolic Enzyme/Protease
Storage:	Please store the product under the recommended conditions in the Certificate of Analysis.



### BIOLOGICAL ACTIVITY

#### Description

Desmethylene paroxetine hydrochloride is a major urinary metabolite of Paroxetine. Paroxetine is a potent serotonin reuptake inhibitor<sup>[1]</sup>.

### REFERENCES

[1]. Mireia Segura, et al. Synthesis of the major metabolites of paroxetine. *Bioorg Chem.* 2003 Jun;31(3):248-58.

**Caution: Product has not been fully validated for medical applications. For research use only.**

Tel: 609-228-6898

Fax: 609-228-5909

E-mail: tech@MedChemExpress.com

Address: 1 Deer Park Dr, Suite Q, Monmouth Junction, NJ 08852, USA