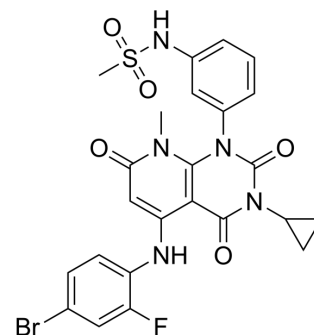


JTP-70902

Cat. No.:	HY-126048
CAS No.:	871696-49-0
Molecular Formula:	C ₂₄ H ₂₁ BrFN ₅ O ₅ S
Molecular Weight:	590.42
Target:	MEK
Pathway:	MAPK/ERK Pathway
Storage:	Please store the product under the recommended conditions in the Certificate of Analysis.



BIOLOGICAL ACTIVITY

Description

JTP-70902, a p15^{INK4b}-inductive compound, is a MEK1/2 inhibitor. JTP-70902 exhibits potent antitumor effect^[1].

REFERENCES

[1]. Yamaguchi T, et, al. Identification of JTP-70902, a p15^{INK4b}-inductive compound, as a novel MEK1/2 inhibitor. *Cancer Sci.* 2007 Nov;98(11):1809-16.

Caution: Product has not been fully validated for medical applications. For research use only.

Tel: 609-228-6898

Fax: 609-228-5909

E-mail: tech@MedChemExpress.com

Address: 1 Deer Park Dr, Suite Q, Monmouth Junction, NJ 08852, USA