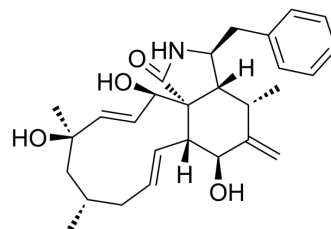


## Cytochalasin J

Cat. No.:	HY-126556
CAS No.:	53760-20-6
Molecular Formula:	C <sub>28</sub> H <sub>37</sub> NO <sub>4</sub>
Molecular Weight:	451.6
Target:	Microtubule/Tubulin
Pathway:	Cell Cycle/DNA Damage; Cytoskeleton
Storage:	Please store the product under the recommended conditions in the Certificate of Analysis.



### BIOLOGICAL ACTIVITY

#### Description

Cytochalasin J is a cytochalasin derivative. Cytochalasin J affects mitotic spindle microtubule organization and kinetochore structure, and exhibits cytotoxicity in human leukemia K562 cell with IC<sub>50</sub> of 1.5 μM<sup>[1][2]</sup>.

### REFERENCES

[1]. Xu S, et al., Cytotoxic cytochalasin metabolites of endophytic *Endothia gyrosa*. *Chem Biodivers*. 2009 May;6(5):739-45.

[2]. Wrench GA, et al., Cytochalasin J treatment significantly alters mitotic spindle microtubule organization and kinetochore structure in PtK1 cells. *Cell Motil Cytoskeleton*. 1997;36(2):112-24.

**Caution: Product has not been fully validated for medical applications. For research use only.**

Tel: 609-228-6898

Fax: 609-228-5909

E-mail: tech@MedChemExpress.com

Address: 1 Deer Park Dr, Suite Q, Monmouth Junction, NJ 08852, USA