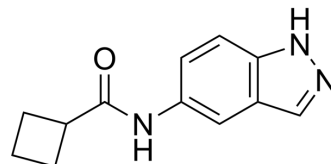


## Rhodblock 6

Cat. No.:	HY-126913
CAS No.:	886625-06-5
Molecular Formula:	C <sub>12</sub> H <sub>13</sub> N <sub>3</sub> O
Molecular Weight:	215.25
Target:	ROCK
Pathway:	Cell Cycle/DNA Damage; Cytoskeleton; Stem Cell/Wnt; TGF-beta/Smad
Storage:	Please store the product under the recommended conditions in the Certificate of Analysis.



### BIOLOGICAL ACTIVITY

Description	Rhodblock 6 is a Rho kinase (ROCK) inhibitor that inhibits phospho-MRLC (myosin regulatory light chain) localization <sup>[1]</sup> .
In Vitro	Rhodblock 6 (1-30 μM) inhibits ROCK activity robustly and in a dose-dependent manner. Rhodblock 6 also inhibits its human ortholog, ROCK I, and Rhodblock 6 (100 μM; 20 h) causes the disruption of stress fibers in human HeLa cells <sup>[1]</sup> . MCE has not independently confirmed the accuracy of these methods. They are for reference only.

### REFERENCES

[1]. Adam B Castoreno, et al. Small molecules discovered in a pathway screen target the Rho pathway in cytokinesis. Nat Chem Biol. 2010 Jun;6(6):457-63.

**Caution: Product has not been fully validated for medical applications. For research use only.**

Tel: 609-228-6898

Fax: 609-228-5909

E-mail: tech@MedChemExpress.com

Address: 1 Deer Park Dr, Suite Q, Monmouth Junction, NJ 08852, USA