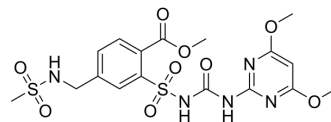


Mesosulfuron-methyl

Cat. No.:	HY-126987
CAS No.:	208465-21-8
Molecular Formula:	C ₁₇ H ₂₁ N ₅ O ₉ S ₂
Molecular Weight:	503.51
Target:	Acetolactate Synthase (ALS)
Pathway:	Metabolic Enzyme/Protease
Storage:	Please store the product under the recommended conditions in the Certificate of Analysis.



BIOLOGICAL ACTIVITY

Description

Mesosulfuron-methyl is a sulfonylurea herbicide that inhibits acetolactate synthase (ALS) and is used in research for post-emergence control of ryegrass and *Avena* spp. (wild oat) in wheat fields^[1].

REFERENCES

[1]. Kuk Yi, et al. Cross-resistance profile of mesosulfuron-methyl-resistant Italian ryegrass in the southern United States. *Pest Manag Sci.* 2007;63(4):349-357.

Caution: Product has not been fully validated for medical applications. For research use only.

Tel: 609-228-6898

Fax: 609-228-5909

E-mail: tech@MedChemExpress.com

Address: 1 Deer Park Dr, Suite Q, Monmouth Junction, NJ 08852, USA