

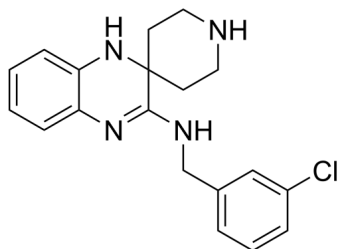
Liproxstatin-1

Cat. No.: HY-12726
 Batch No.: 262230
 CAS No.: 950455-15-9
 Molecular Formula: $C_{19}H_{21}ClN_4$

ANALYTICAL DATA

Theoretical: C(66.95%)、H(6.21%)、N(16.44%)
 Result: C(66.66%)、H(6.05%)、N(16.43%)

Chemical Structure:



Caution: Product has not been fully validated for medical applications. For research use only.

Tel: 609-228-6898

Fax: 609-228-5909

E-mail: tech@MedChemExpress.com

Address: 1 Deer Park Dr, Suite Q, Monmouth Junction, NJ 08852, USA