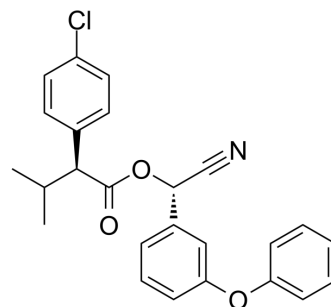


## Esfenvalerate

<b>Cat. No.:</b>	HY-129257		
<b>CAS No.:</b>	66230-04-4		
<b>Molecular Formula:</b>	C <sub>25</sub> H <sub>22</sub> ClNO <sub>3</sub>		
<b>Molecular Weight:</b>	419.9		
<b>Target:</b>	Others		
<b>Pathway:</b>	Others		
<b>Storage:</b>	Powder	-20°C	3 years
		4°C	2 years
	In solvent	-80°C	6 months
		-20°C	1 month



### SOLVENT & SOLUBILITY

<b>In Vitro</b>	DMSO : 100 mg/mL (238.15 mM; Need ultrasonic)				
		Solvent Concentration	Mass 1 mg	5 mg	10 mg
	<b>Preparing Stock Solutions</b>	1 mM	2.3815 mL	11.9076 mL	23.8152 mL
		5 mM	0.4763 mL	2.3815 mL	4.7630 mL
10 mM		0.2382 mL	1.1908 mL	2.3815 mL	
Please refer to the solubility information to select the appropriate solvent.					
<b>In Vivo</b>	<ol style="list-style-type: none"> <li>Add each solvent one by one: 10% DMSO &gt;&gt; 40% PEG300 &gt;&gt; 5% Tween-80 &gt;&gt; 45% saline Solubility: 2.5 mg/mL (5.95 mM); Suspended solution; Need ultrasonic</li> <li>Add each solvent one by one: 10% DMSO &gt;&gt; 90% (20% SBE-β-CD in saline) Solubility: 2.5 mg/mL (5.95 mM); Suspended solution; Need ultrasonic</li> <li>Add each solvent one by one: 10% DMSO &gt;&gt; 90% corn oil Solubility: ≥ 2.5 mg/mL (5.95 mM); Clear solution</li> </ol>				

### BIOLOGICAL ACTIVITY

<b>Description</b>	Esfenvalerate is one of the four isomers of the pyrethroid insecticide fenvalerate <sup>[1]</sup> .
<b>In Vivo</b>	<p>Esfenvalerate (0.1, 1, 7.5 or 15 mg/kg/day; gavage; from gestation day (GD) 13 to 19) shows clinical signs of neurotoxicity with 15 mg/kg/day<sup>[1]</sup>.</p> <p>MCE has not independently confirmed the accuracy of these methods. They are for reference only.</p>

---

## REFERENCES

---

[1]. Anne-Marie Saillenfait, et al. The Pyrethroid Insecticides Permethrin and Esfenvalerate Do Not Disrupt Testicular Steroidogenesis in the Rat Fetus. *Toxicology*. 2018 Dec 1;410:116-124.

---

**Caution: Product has not been fully validated for medical applications. For research use only.**

Tel: 609-228-6898

Fax: 609-228-5909

E-mail: [tech@MedChemExpress.com](mailto:tech@MedChemExpress.com)

Address: 1 Deer Park Dr, Suite Q, Monmouth Junction, NJ 08852, USA