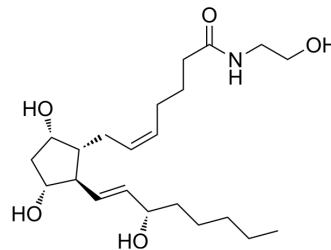


## Prostaglandin F2 $\alpha$ ethanolamide

Cat. No.:	HY-130660
CAS No.:	353787-70-9
Molecular Formula:	C <sub>22</sub> H <sub>39</sub> NO <sub>5</sub>
Molecular Weight:	397.55
Target:	Prostaglandin Receptor
Pathway:	GPCR/G Protein
Storage:	Please store the product under the recommended conditions in the Certificate of Analysis.



### BIOLOGICAL ACTIVITY

#### Description

Prostaglandin F2 $\alpha$  ethanolamide (Prostamide F2 $\alpha$ ) is an ethanolamide-like G protein-coupled receptor. Prostaglandin F2 $\alpha$  is also a luteinizing hormone in sheep and may be a nociceptive mediator in the spinal cord<sup>[1][2][3]</sup>.

### REFERENCES

- [1]. Richie-Jannetta R, et al. Structural determinants for calcium mobilization by prostaglandin E2 and prostaglandin F2 $\alpha$  glyceryl esters in RAW 264.7 cells and H1819 cells. *Prostaglandins Other Lipid Mediat.* 2010 Jun;92(1-4):19-24.
- [2]. McCracken J A, et al. Prostaglandin F2 $\alpha$  identified as a luteolytic hormone in sheep[J]. *Nature New Biology*, 1972, 238(83): 129-134.
- [3]. Woodward DF, et al. Recent progress in prostaglandin F2 $\alpha$  ethanolamide (prostamide F2 $\alpha$ ) research and therapeutics. *Pharmacol Rev.* 2013 Jul 26;65(4):1135-47.

**Caution: Product has not been fully validated for medical applications. For research use only.**

Tel: 609-228-6898

Fax: 609-228-5909

E-mail: tech@MedChemExpress.com

Address: 1 Deer Park Dr, Suite Q, Monmouth Junction, NJ 08852, USA