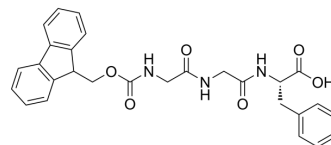


Fmoc-Gly-Gly-Phe-OH (GMP)

Cat. No.:	HY-131833G
CAS No.:	160036-44-2
Molecular Formula:	C ₂₈ H ₂₇ N ₃ O ₆
Molecular Weight:	501.53
Target:	ADC Linker
Pathway:	Antibody-drug Conjugate/ADC Related
Storage:	Please store the product under the recommended conditions in the Certificate of Analysis.



BIOLOGICAL ACTIVITY

Description

Fmoc-Gly-Gly-Phe-OH GMP is a GMP grade Fmoc-Gly-Gly-Phe-OH (HY-131833). Fmoc-Gly-Gly-Phe-OH is a cleavable ADC linker used in the synthesis of antibody-drug conjugates (ADCs)^[1].

REFERENCES

[1]. Antibody-drug conjugate. Patent WO2014057687A1

Caution: Product has not been fully validated for medical applications. For research use only.

Tel: 609-228-6898

Fax: 609-228-5909

E-mail: tech@MedChemExpress.com

Address: 1 Deer Park Dr, Suite Q, Monmouth Junction, NJ 08852, USA