

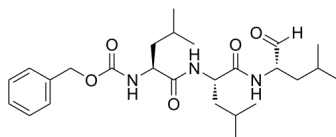
**MG-132**

Cat. No.: HY-13259  
Batch No.: 285669  
CAS No.: 133407-82-6  
Molecular Formula: C<sub>26</sub>H<sub>41</sub>N<sub>3</sub>O<sub>5</sub>

**ANALYTICAL DATA**

Theoretical: C(65.41%)、H(8.7%)、N(8.8%)  
Result: C(65.23%)、H(8.59%)、N(8.79%)

Chemical Structure:



**Caution: Product has not been fully validated for medical applications. For research use only.**

Tel: 609-228-6898

Fax: 609-228-5909

E-mail: [tech@MedChemExpress.com](mailto:tech@MedChemExpress.com)

Address: 1 Deer Park Dr, Suite Q, Monmouth Junction, NJ 08852, USA