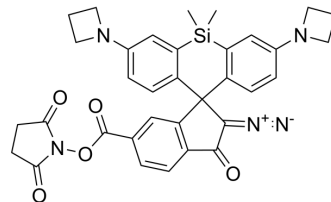


PA Janelia Fluor[®] 646, SE

Cat. No.:	HY-133535
CAS No.:	2093120-32-0
Molecular Formula:	C ₃₄ H ₃₁ N ₅ O ₅ Si
Molecular Weight:	617.73
Target:	Fluorescent Dye
Pathway:	Others
Storage:	Please store the product under the recommended conditions in the Certificate of Analysis.



BIOLOGICAL ACTIVITY

Description

PA Janelia Fluor[®] 646, SE (PA-JF646-NHS), a photoactivatable fluorescent dye, is an NHS ester for coupling to primary amine groups. PA-JF646-NHS is non-fluorescent until activated at 365 nm. NHS ester can be converted to relevant substrate for use in self-labeling tag systems, e.g. HaloTag[®] and SNAP-tag[®]. PA-JF646-NHS is used for single molecule tracking and super resolution microscopy in live cells, specifically live cell sptPALM and fixed cell PALM. ($\lambda_{\text{Excitation/emission}} \sim 650/664$ nm). Janelia Fluor[®] products are licensed under U.S. Pat. Nos. 9,933,417, 10,018,624 and 10,161,932 and other patents from Howard Hughes Medical Institute.

Caution: Product has not been fully validated for medical applications. For research use only.

Tel: 609-228-6898

Fax: 609-228-5909

E-mail: tech@MedChemExpress.com

Address: 1 Deer Park Dr, Suite Q, Monmouth Junction, NJ 08852, USA