

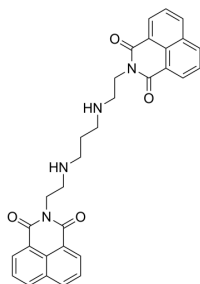
Elinafide

Cat. No.: HY-13620
CAS No.: 162706-37-8
Batch No.: 376340
Chemical Name: 1H-Benz[de]isoquinoline-1,3(2H)-dione, 2,2'-[1,3-propanediylbis(imino-2,1-ethanediyl)]bis-

PHYSICAL AND CHEMICAL PROPERTIES

Molecular Formula: $C_{31}H_{28}N_4O_4$
Molecular Weight: 520.58
Storage: Powder -20°C 3 years
4°C 2 years
In solvent -80°C 6 months
-20°C 1 month

Chemical Structure:



ANALYTICAL DATA

Appearance: Light yellow to yellow (Solid)
 1H NMR Spectrum: Consistent with structure
LCMS: Consistent with structure
Purity (LCMS): 98.59%
Conclusion: The product has been tested and complies with the given specifications.

Caution: Product has not been fully validated for medical applications. For research use only.

Tel: 609-228-6898

Fax: 609-228-5909

E-mail: tech@MedChemExpress.com

Address: 1 Deer Park Dr, Suite Q, Monmouth Junction, NJ 08852, USA