

## Mifepristone (Standard)

**Cat. No.:**

HY-13683R

**Batch No.:**

287625

**CAS No.:**

84371-65-3

**Test Date:**

2023-09-08

**Expiry Date:**

2025-09-07 (Stability testing is ongoing to ensure concentration accuracy . The certificate of analysis and product expiry date will be updated upon completion of testing. You can download the latest version from our official website)

**Molecular Formula:**
 $C_{29}H_{35}NO_2$ 
**Molecular Weight:**

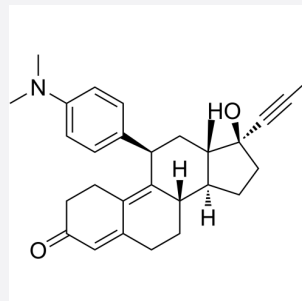
429.59

**Package:**

Brown glass bottle

**Storage:**

4°C, sealed storage, away from moisture and light

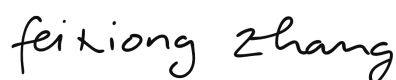

**Assay: 98.08%**

Assay (%) = (100%-Loss On Drying - Residue on ignition) \* Purity

| Analytical                   | Specification  | Result                    |
|------------------------------|--|---------------------------|
| Appearance:                  | White to light yellow (Solid)  | Light yellow (Solid)      |
| <sup>1</sup> H NMR Spectrum: | Consistent with structure  | Consistent with structure |
| MS:                          | Consistent with structure  | Consistent with structure |
| Purity:                      | Not less than 90.0%  | 98.49% (HPLC)             |
| Loss on drying (LOD):        | <3.0%  | 0.322%                    |
| Residue on ignition (ROI):   | N/A  | 0.09%                     |
| Traceability:                | Fully qualified and calibrated to ISO 17025 requirements. All calibrations utilize institute of metrology traceable weights which are calibrated externally by a qualified ISO 17025 accredited calibration laboratory to metrology institute standards. |                           |



Quality Control



Quality Assurance

