

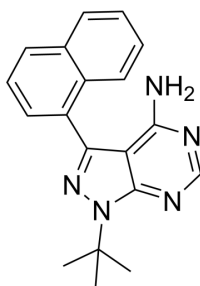
1-Naphthyl PP1

Cat. No.: HY-13941
 CAS No.: 221243-82-9
 Batch No.: 13995
 Chemical Name: 1H-Pyrazolo[3,4-d]pyrimidin-4-amine, 1-(1,1-dimethylethyl)-3-(1-naphthalenyl)-

PHYSICAL AND CHEMICAL PROPERTIES

Molecular Formula: C₁₉H₁₉N₅
 Molecular Weight: 317.39
 Storage: Powder -20°C 3 years
 4°C 2 years
 In solvent -80°C 2 years
 -20°C 1 year

Chemical Structure:



ANALYTICAL DATA

Appearance: Light yellow to khaki (Solid)
 LCMS: Consistent with structure
 Purity (LCMS): 99.08%
 Conclusion: The product has been tested and complies with the given specifications.

Caution: Product has not been fully validated for medical applications. For research use only.

Tel: 609-228-6898

Fax: 609-228-5909

E-mail: tech@MedChemExpress.com

Address: 1 Deer Park Dr, Suite Q, Monmouth Junction, NJ 08852, USA