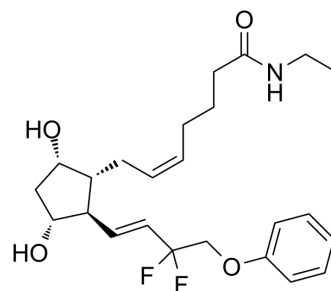


Tafluprost ethyl amide

Cat. No.:	HY-139420
CAS No.:	1185851-52-8
Molecular Formula:	C ₂₄ H ₃₃ F ₂ NO ₄
Molecular Weight:	437.52
Target:	Others
Pathway:	Others
Storage:	Please store the product under the recommended conditions in the Certificate of Analysis.



BIOLOGICAL ACTIVITY

Description

Tafluprost ethyl amide is a prostaglandin derivative. Tafluprost ethyl amide is capable of intraocular pressure (IOP) reduction and influencing eyelash growth. Tafluprost ethyl amide can be used in antiglaucoma ophthalmic compositions or cosmetics^[1].

REFERENCES

[1]. Krupa M, et al. A Novel Convergent Synthesis of the Potent Antiglaucoma Agent Tafluprost. *Molecules*. 2017 Jan 31;22(2):217.

Caution: Product has not been fully validated for medical applications. For research use only.

Tel: 609-228-6898

Fax: 609-228-5909

E-mail: tech@MedChemExpress.com

Address: 1 Deer Park Dr, Suite Q, Monmouth Junction, NJ 08852, USA