

Levomefolic acid-13C,d3

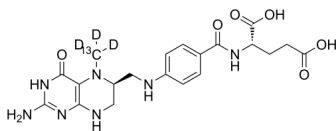
Cat. No.: HY-14781S1
Batch No.: 285892
CAS No.: 1356019-94-7
Molecular Formula: C₁₉¹³CH₂₂D₃N₇O₆

ANALYTICAL DATA

Theoretical: C(52.04%)、H(6.09%)、N(21.16%)

Result: C(48.37%)、H(5.46%)、N(19.84%)

Chemical Structure:



Caution: Product has not been fully validated for medical applications. For research use only.

Tel: 609-228-6898

Fax: 609-228-5909

E-mail: tech@MedChemExpress.com

Address: 1 Deer Park Dr, Suite Q, Monmouth Junction, NJ 08852, USA