

## Cevipabulin

---

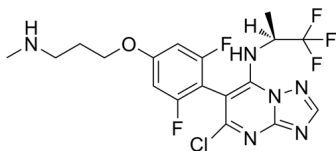
Cat. No.: HY-14949  
Batch No.: 16330  
CAS No.: 849550-05-6  
Molecular Formula: C<sub>18</sub>H<sub>18</sub>ClF<sub>5</sub>N<sub>6</sub>O

### ANALYTICAL DATA

Theoretical: C(46.51%)、H(3.90%)、N(18.08%)

Result: C(46.10%)、H(3.90%)、N(17.90%)

Chemical Structure:



**Caution: Product has not been fully validated for medical applications. For research use only.**

Tel: 609-228-6898

Fax: 609-228-5909

E-mail: [tech@MedChemExpress.com](mailto:tech@MedChemExpress.com)

Address: 1 Deer Park Dr, Suite Q, Monmouth Junction, NJ 08852, USA