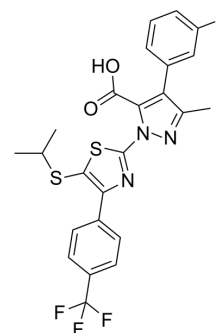


## BTM-3528

Cat. No.:	HY-149543
CAS No.:	2054998-45-5
Molecular Formula:	C <sub>24</sub> H <sub>19</sub> F <sub>4</sub> N <sub>3</sub> O <sub>2</sub> S <sub>2</sub>
Molecular Weight:	521.55
Target:	Mitochondrial Metabolism; Eukaryotic Initiation Factor (eIF); Apoptosis
Pathway:	Metabolic Enzyme/Protease; Cell Cycle/DNA Damage; Apoptosis
Storage:	Please store the product under the recommended conditions in the Certificate of Analysis.



## BIOLOGICAL ACTIVITY

### Description

BTM-3528 is an activator of the mitochondrial protease OMA1 and mediates excessive activation of the mitochondrial integrated stress response (ISR). BTM-3528 stimulates OMA1-dependent DELE1 and OPA1 cleavage and mitochondrial fragmentation. BTM-3528 activates eIF2 $\alpha$  kinase HRI, inducing cell growth arrest and apoptosis. BTM-3528 has anticancer activity against multiple DLBCL cell lines and has in vivo inhibitory potency in a mouse model xenografted with human DLBCL SU-DHL-10 cells<sup>[1]</sup>.

## REFERENCES

[1]. Schwarzer A, et al. Targeting aggressive B-cell lymphomas through pharmacological activation of the mitochondrial protease OMA1. Mol Cancer Ther. 2023 Aug 30..

**Caution: Product has not been fully validated for medical applications. For research use only.**

Tel: 609-228-6898

Fax: 609-228-5909

E-mail: tech@MedChemExpress.com

Address: 1 Deer Park Dr, Suite Q, Monmouth Junction, NJ 08852, USA