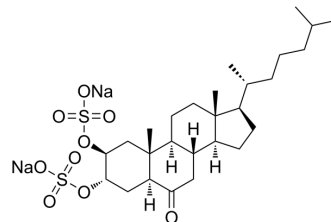


AChe-IN-31

Cat. No.:	HY-149888
CAS No.:	1325209-07-1
Molecular Formula:	C ₂₇ H ₄₄ Na ₂ O ₉ S ₂
Molecular Weight:	622.74
Target:	Cholinesterase (ChE)
Pathway:	Neuronal Signaling
Storage:	Please store the product under the recommended conditions in the Certificate of Analysis.



BIOLOGICAL ACTIVITY

Description	AChe-IN-31 (compound 1) is a non-competitive AChE inhibitor with potential for the study of Alzheimer's disease ^[1] .
IC ₅₀ & Target	AChE ^[1] .

REFERENCES

[1]. Richmond V, et al. Putting the Puzzle Together To Get the Whole Picture: Molecular Basis of the Affinity of Two Steroid Derivatives to Acetylcholinesterase. ACS Omega. 2023 Jul 6;8(28):25610-25622.

Caution: Product has not been fully validated for medical applications. For research use only.

Tel: 609-228-6898

Fax: 609-228-5909

E-mail: tech@MedChemExpress.com

Address: 1 Deer Park Dr, Suite Q, Monmouth Junction, NJ 08852, USA