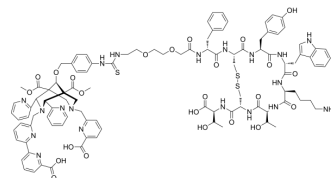


L1-PEG2-TATE

Cat. No.:	HY-150202
CAS No.:	2794143-66-9
Molecular Formula:	C ₁₀₃ H ₁₁₇ N ₁₉ O ₂₄ S ₃
Molecular Weight:	2101.34
Target:	Others
Pathway:	Others
Storage:	Please store the product under the recommended conditions in the Certificate of Analysis.



BIOLOGICAL ACTIVITY

Description	L1-PEG2-TATE is a nonadentate ligand. L1-PEG2-TATE can be used for the research of imaging ^[1] .
In Vitro	L1-PEG2-TATE has activity for ²²⁵ Ac-Labeled TATE derivatives with an EC ₅₀ value of 1.29 (1 h) and 0.44 (4 h) kBq/mL ^[1] . MCE has not independently confirmed the accuracy of these methods. They are for reference only.

REFERENCES

[1]. Patrick Cieslik, et al. Toward Personalized Medicine: One Chelator for Imaging and Therapy with Lutetium-177 and Actinium-225. J Am Chem Soc. 2022 Nov 30;144(47):21555-21567.

Caution: Product has not been fully validated for medical applications. For research use only.

Tel: 609-228-6898

Fax: 609-228-5909

E-mail: tech@MedChemExpress.com

Address: 1 Deer Park Dr, Suite Q, Monmouth Junction, NJ 08852, USA