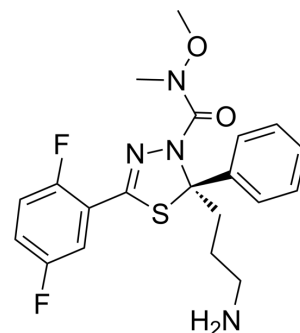


## (R)-Filanesib

Cat. No.:	HY-15187A
CAS No.:	885060-08-2
Molecular Formula:	C <sub>20</sub> H <sub>22</sub> F <sub>2</sub> N <sub>4</sub> O <sub>2</sub> S
Molecular Weight:	420.48
Target:	Kinesin
Pathway:	Cell Cycle/DNA Damage; Cytoskeleton
Storage:	Powder    -20°C    3 years 4°C    2 years In solvent   -80°C    2 years -20°C    1 year



### SOLVENT & SOLUBILITY

#### In Vitro

DMSO : ≥ 100 mg/mL (237.82 mM)  
 \* "≥" means soluble, but saturation unknown.

	Solvent Concentration	Mass	1 mg	5 mg	10 mg
Preparing Stock Solutions	1 mM		2.3782 mL	11.8912 mL	23.7823 mL
	5 mM		0.4756 mL	2.3782 mL	4.7565 mL
	10 mM		0.2378 mL	1.1891 mL	2.3782 mL

Please refer to the solubility information to select the appropriate solvent.

#### In Vivo

- Add each solvent one by one: 10% DMSO >> 40% PEG300 >> 5% Tween-80 >> 45% saline  
 Solubility: ≥ 3.75 mg/mL (8.92 mM); Clear solution
- Add each solvent one by one: 10% DMSO >> 90% corn oil  
 Solubility: ≥ 3.75 mg/mL (8.92 mM); Clear solution

### BIOLOGICAL ACTIVITY

#### Description

(R)-Filanesib ((R)-ARRY-520) is the R-enantiomer of Filanesib (HY-15187). Filanesib is a synthetic kinesin spindle protein (KSP) inhibitor with an IC<sub>50</sub> of 6 nM.

**Caution: Product has not been fully validated for medical applications. For research use only.**

Tel: 609-228-6898

Fax: 609-228-5909

E-mail: tech@MedChemExpress.com

Address: 1 Deer Park Dr, Suite Q, Monmouth Junction, NJ 08852, USA