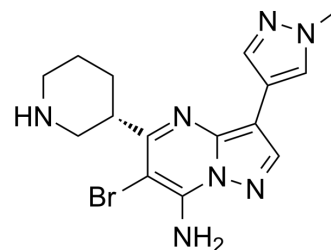


## SCH900776 (S-isomer)

Cat. No.:	HY-15532B
CAS No.:	891494-64-7
Molecular Formula:	C <sub>15</sub> H <sub>18</sub> BrN <sub>7</sub>
Molecular Weight:	376.25
Target:	Others
Pathway:	Others
Storage:	<div>Powder</div> <div>-20°C 3 years</div> <div>4°C 2 years</div> <div>In solvent</div> <div>-80°C 2 years</div> <div>-20°C 1 year</div>



### SOLVENT & SOLUBILITY

#### In Vitro

DMSO : ≥ 100 mg/mL (265.78 mM)

\* "≥" means soluble, but saturation unknown.

	Solvent Concentration	Mass	1 mg	5 mg	10 mg
Preparing Stock Solutions	1 mM		2.6578 mL	13.2890 mL	26.5781 mL
	5 mM		0.5316 mL	2.6578 mL	5.3156 mL
	10 mM		0.2658 mL	1.3289 mL	2.6578 mL

Please refer to the solubility information to select the appropriate solvent.

#### In Vivo

- Add each solvent one by one: 10% DMSO >> 40% PEG300 >> 5% Tween-80 >> 45% saline  
Solubility: ≥ 2.5 mg/mL (6.64 mM); Clear solution
- Add each solvent one by one: 10% DMSO >> 90% (20% SBE-β-CD in saline)  
Solubility: ≥ 2.5 mg/mL (6.64 mM); Clear solution
- Add each solvent one by one: 10% DMSO >> 90% corn oil  
Solubility: ≥ 2.5 mg/mL (6.64 mM); Clear solution

### BIOLOGICAL ACTIVITY

#### Description

SCH900776 S-isomer is the S-isomer of SCH900776. SCH900776 is a potent, selective and orally bioavailable inhibitor of checkpoint kinase1 (Chk1) with IC<sub>50</sub> of 3 nM.

---

**Caution: Product has not been fully validated for medical applications. For research use only.**

Tel: 609-228-6898

Fax: 609-228-5909

E-mail: [tech@MedChemExpress.com](mailto:tech@MedChemExpress.com)

Address: 1 Deer Park Dr, Suite Q, Monmouth Junction, NJ 08852, USA